

CONSTRUCTION AND ENGINEERING

EQUIPMENT CATALOGUE //

ASIAN CONSTRUCTION EQUIPMENT GROUP CO., LTD. (ACE)

Headoffice: Floor 22, No. 14, Business Outer Ring Road, Jinshui District, Zhengzhou,
Henan Province, China

Tel.: +86-371-55635088

Web.: www.asianconst.com

Email: info@asianconst.com



CATALOGUE

01

01 Snapshot of ACE
02 Factory Environment
03 Strength At A Glance
04 Business Segments

03

26 Road Roller
31 Bulldozer
34 Asphalt Distributor Truck

02

07 Crawler Excavator
12 Wheel Excavator
15 Backhoe Loader
21 Motor Grader

CONSTRUCTION AND ENGINEERING EQUIPMENT TOTAL SOLUTION PROVIDER

Asian Construction Equipment Group Co., Ltd. (ACE) is a professional enterprise dedicated to the R&D, manufacturing, sales, service of construction equipment. As a construction and engineering equipment solution provider, ACE is striving to contribute value to global infrastructure by exporting construction material equipment, general construction machinery, and road-building machinery.

ACE now offers equipment covering the entire process chain in construction. Asphalt mixing plants, vibration mixing concrete plants, excavators, loaders, crane vehicles, asphalt distributor trucks, range of road marking machines, etc., with the increasingly enlarged scope of construction equipment we build, ACE has formed the prominent ability to provide our customers with integrated solutions. Adhering to the development concept of "Making Our Customers Successful", our team, all with years of working experience, enable us to give you worry-free service as always.

The group has also continuously deepened its technical cooperation with well-known enterprises and universities. Over recent years, our technical patents soar up, not only helping us keep pace with the most cutting-edge technology but in some aspects leading the construction industry. By far, ACE's products have shown their presence in more than 90 countries and regions.



Factory Environment



Strength At A Glance



20+ Years of History



Total Occupied Area of 90,000m²



Over 300 Staff, R&D Personnel 5%



Annual Output of 400+ Machinery



Accumulatively Obtained 70+ patents



3 Manufacturing Bases Formed

Business Segments





PRODUCT RANGE



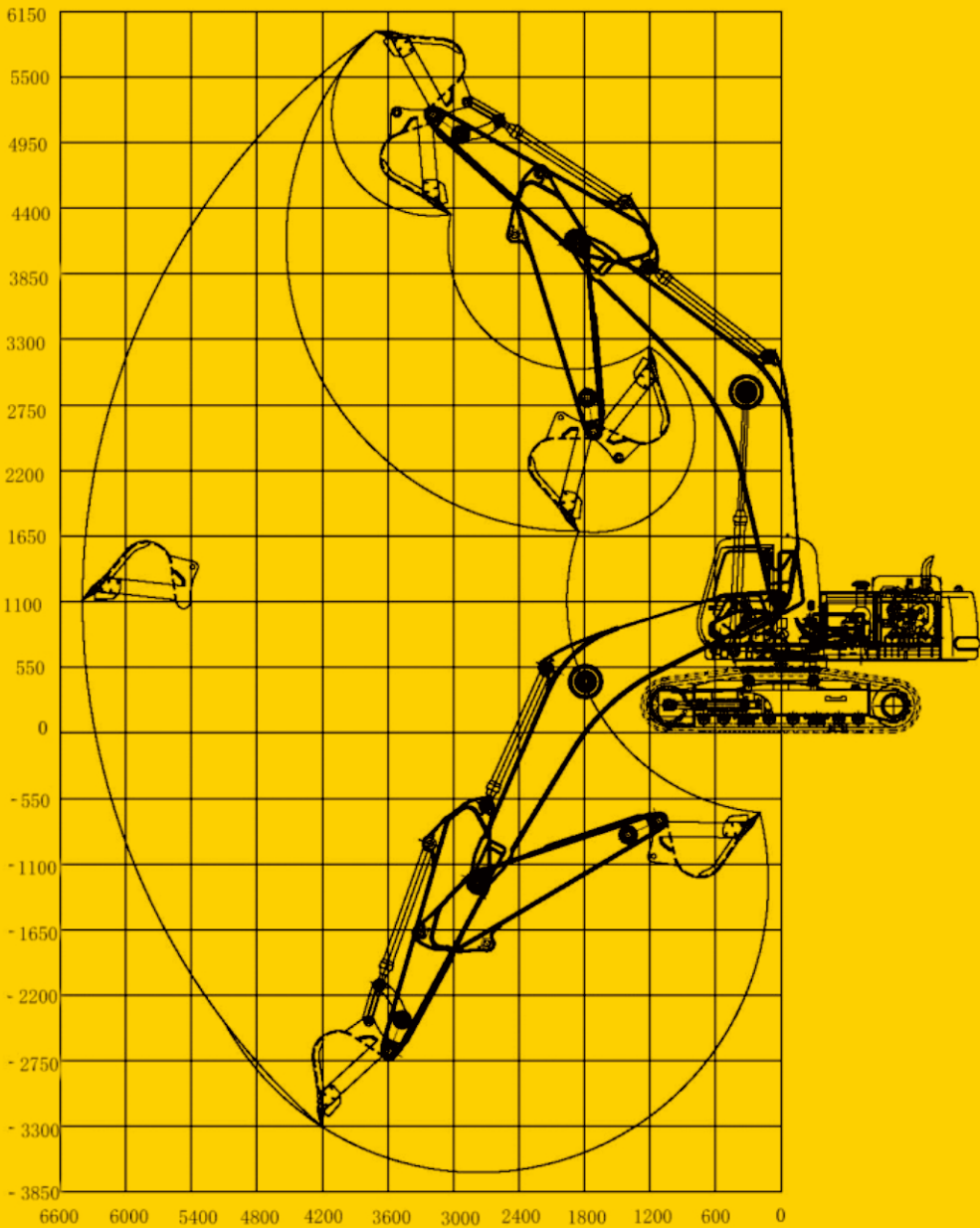


Excavator

- The supporting parts and components employed are of world-famous brands, with high availability and convenient maintenance.
- Exclusive and efficient hydraulic control system
 - Powerful travel traction
 - Effectively prevent soil and rock from being mixed
 - Highly efficient and rapid operation
 - High-strength frame structure and greater clearance
 - Safe and open engine hood
 - Convenient and quick maintenance



WORKING RANGE



Product Model	ACE65	ACE150	ACE200	ACE230	ACE300	ACE340	ACE370	ACE400	ACE520
Max. digging depth(mm)	3820	5625	6592	6592	6180	6180	7275	7135	7795
Min. digging height(mm)	5760	8750	9616	9616	9705	9705	10315	10100	10787
Max.unloading height(mm)	4030	6300	6830	6830	7024	7024	7303	7180	7915
Max. digging radius(mm)	6155	8160	9873	9873	10175	10175	10506	10635	11800
Min. swing radius(mm)	2205	2207	3560	3560	4019	4019	4019	4485	5210

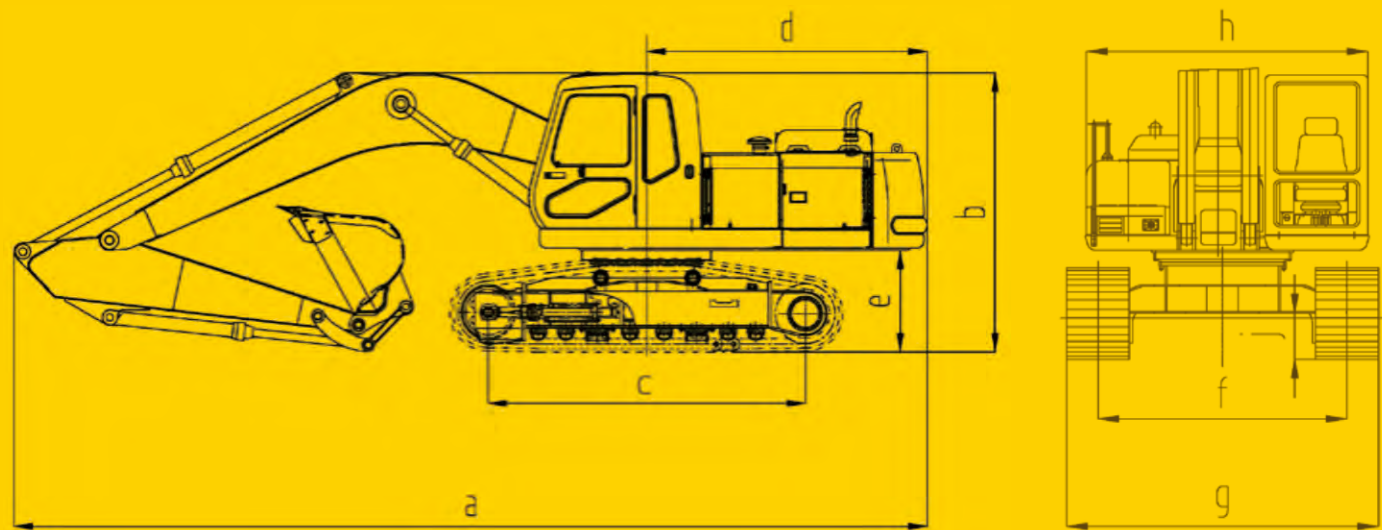


PERFORMANCE PARAMETERS

Product Model	ACE65	ACE150	ACE200	ACE230
Weight	5.95T	14.8T	20.6T	22.3T
Bucket capacity	0.21m³	0.53-0.58m³	0.92m³	1.2m³
Engine rated power	35kW	73kW	112-130kW	128-135kW
Swing speed	9.5r/min	10.1r/min	10.7r/min	10.7r/min
Travel speed (high/low)	4.1/3.0km/h	5.04/3.01km/h	5.3/2.9km/h	5.9/3.2km/h
Ground specific pressure	0. 32kg/cm²	0. 35-0. 36kg/cm²	0. 35-0. 36kg/cm²	0. 43kg/cm²
Grade ability	70%	70%	70%	70%
Digging force	Standard 37.7KN	77.4KN	136KN	146.4KN
Boom length	3000mm	4600mm	5700mm	5700mm
Arm length	1600mm	2500mm	2900mm	2900mm

ACE300	ACE340	ACE370	ACE400	ACE520
29.5T	32T	35.6T	37.8T	48.9T
1.4m³	1.5m³	1.8m³	1.9m³	2.4m³
168kW	186kW	212kW	214 (287)kW	280kW
10.1r/min	10.1r/min	9.4r/min	8.2r/min	10.3r/min
5.8/3.4km/h	5.8/3.4km/h	5.7/3.2km/h	4.9/2.9km/h	5.3/3.1km/h
0. 49kg/cm²	0. 49kg/cm²	0. 57kg/cm²	0. 69 kg/cm²	0. 9 kg/cm²
70%	70%	70%	70%	70%
188KN	188KN	188KN	240KN	267KN
6245mm	6245mm	6245mm	6500mm	6300mm
3100mm	3100mm	3100mm	2902mm	2900mm

DIMENSIONS



	Product Model	ACE65	ACE150	ACE200	ACE230	ACE300	ACE340	ACE370	ACE400	ACE520
a	Transport length(mm)	5855	7662	9506	9600	10055	10615	10615	11380	12230
b	Transport arm height(mm)	2580	2980	2800	3005	3697	3697	3697	3720	3705
c	Wheelbase(mm)	1480	2780	3600	3635	4039	4039	4039	4050	4475
d	Radius of gyration platform end(mm)	1655	2202	2794	2794	3188	3188	3188	3530	3800
e	Counter weight ground clearance(mm)	695	894	1096	1096	1150	1150	1150	1250	1460
f	Track gauge(mm)	1990	1990	2400	2400	2600	2600	2600	2750	3303
g	Total width of undercarriage(mm)	1880	2590	2800	2980	3200	3200	3200	3350	3900
h	Width of upper structure(mm)	1880	2540	2540	2990	3199	3199	3199	3155	3340
l	Width of track shoe(mm)	400	600	600	600	600	600	600	600	600
j	Ground clearance(mm)	355	412	475	475	475	506	506	545	770



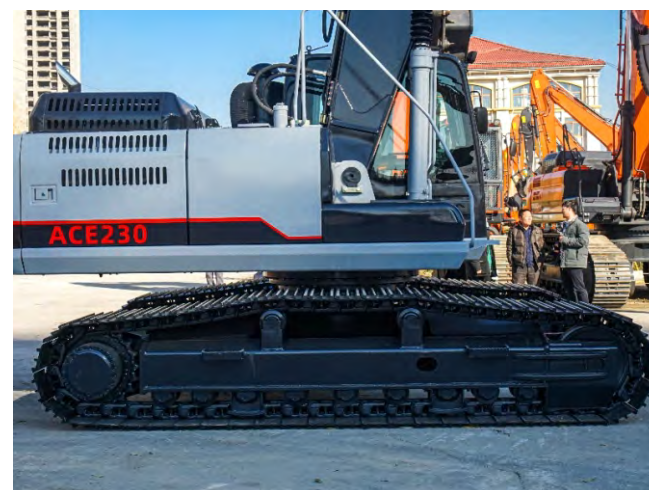
CUMMINS or ISUZU engine with strong power and low fuel consumption



Kawasaki pump and valve guarantee the efficiency of each operation and the stability of the machine



Very comfortable cabin equipped with air conditioning, radio and control screen



Doosan-brand steady rolling chassis



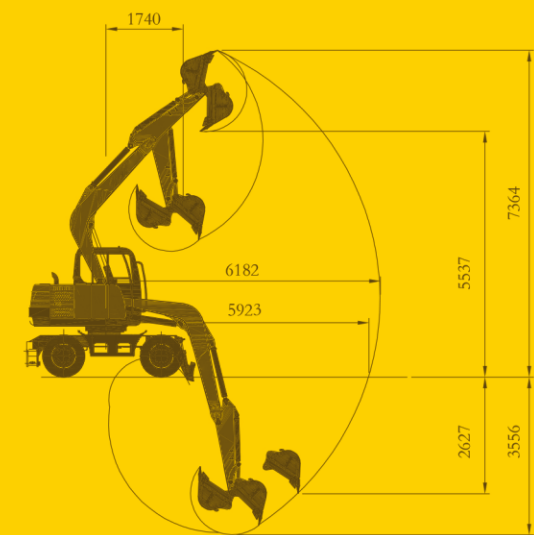
Two-stage filtration to prevent dust from entering the engine





Wheel Excavator

Commonly used in general excavation and small and medium-sized engineering construction such as road and bridge construction, our wheel excavators ACE750L and ACE850L have shown consistent features like excellent performance, high efficiency, and less fuel consumption.



Product Model	ACE750L	ACE850L
Max. Digging Height(mm)	7364	7364
Max. Dumping Height(mm)	5537	5537
Max. Digging Depth(mm)	3556	3556
Max. Vertical Digging	2627	2627
Max. Digging Radius(mm)	5923	5923
Min. Swing Radius(mm)	1740	1740

Features

- Powerful Yuchai engine with advanced turbocharging technology and unique funnel-type fan cover
- Top-rated hydraulic system components ensure reliability, stability, and working efficiency
- Mechanical flexibility and durability are greatly improved due to reinforced chassis, hinge part with forging structure, integrally welded boom, etc.
- Wide vision, luxurious seats, high-energy air conditioner, multi-function LCD monitor, and convenient function switches create a comfortable cab
- Ease of Maintenance is achieved thanks to remote diagnosis, easily replaced filters and separators, and importantly high-quality parts that prolong the service life.



PERFORMANCE PARAMETERS

Product Model	ACE750L	ACE850L
Bucket Capacity(m³)	0.21	0.28
Swing Speed(rmp)	0-12	0-11
Gradeability(°)	25	25
Max. Bucket Digging Force(KN)	45	56
Max. Arm Digging Force(KN)	36	38
Engine Model	YC4DK85	YC4DK85
Power/revolution speed(kW/rmp)	62.5/2200	62.5/2200
Tire Model	8.25-16	8.25-16
System Pressure(MPa)	24	24
Cabin Height(mm)	2850	3010
Axle Base(mm)	2400	2200
Wheel(track)Distance(mm)	1675	1910
Minimum ground clearance(mm)	260	264
Tail Swing Radius(mm)	1940	1730
Dimension(L×W×H)(mm)	6300×2205×2850	6087×2394×3010



BACKHOE LOADER

The backhoe loader integrates the functions of digging and loading into itself, suitable for digging, shoveling, carrying, leveling, and many other application scenes. It can be equipped with attachments like a four-in-one bucket, snow shovel, fork, breaker, etc. to meet a variety of work requirements.



Equipped with Yuchai engines boasting strong power, integral frame, and mid-mounted wing-type outriggers, the backhoes can no doubt meet the needs of various working conditions.

A double pump system and first-class hydraulic components are employed; An auxiliary oil circuit is configured at the loading end and the excavation end.



Fully hydraulic maintenance-free wet braking is adopted; dual pedal control allows for unilateral braking, realizing in-situ steering, and adapting to smaller working environments.

Forward-rotating eight-link loading working device features high unloading, large breakout force, and good bucket translation property.



Excavation working devices with a high-strength structure design can be equipped with a variety of working tools, enabling efficient operation.



PERFORMANCE PARAMETERS

Item	620
Engine Model/Power	YC4A105Z-T20/75kW
Dimensions (L×W×H)	6100×2365×3752mm
Wheel base	2200mm
Min. Ground Clearance	300mm
Bucket Capacity	1.0m³
Breakout Force	38KN
Loading Lifting Capacity	2500KG
Bucket Dumping Height	2742mm
Bucket Dumping Distance	925mm
Backhoe Capacity	0.3m³
Max. Digging Depth	4082/4500mm



HIGHLIGHTS OF BACKHOE LOADER 630



1. Power System

Yuchai YC4A105Z-T20/75KW engine is employed, which is powerful, economical and reliable, and able to meet the power requirements of different working conditions.



2. Walking System

Four-wheel steering and crab-alike walking enable it to apply to almost all working conditions and meet the construction requirements in narrow spaces.

3. Frame

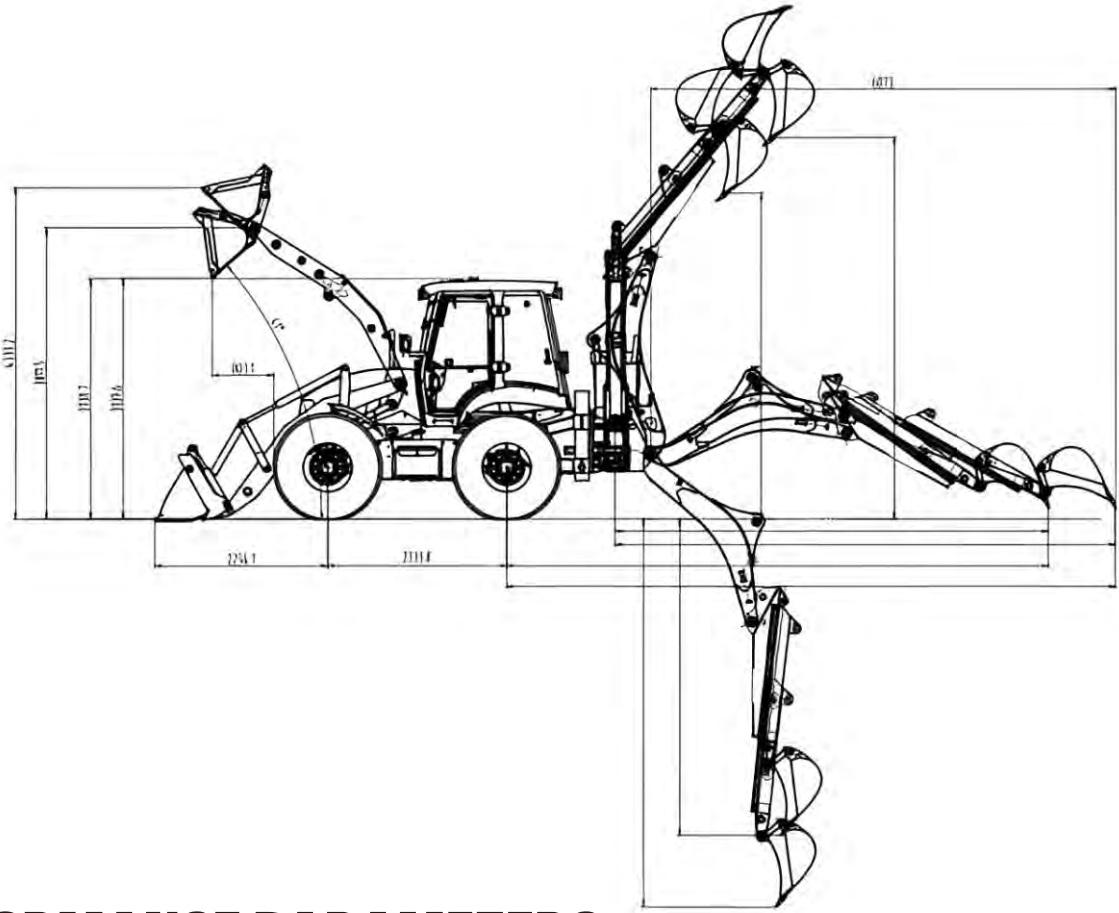
Integrated design; the tire size is 16.9-28; the chassis is more stable and reliable.

4. Excavation Device

It features a high-strength structural design and high-efficiency operation and can be equipped with various operating tools.

5. Cab

In accordance with ROPS/FOPS standards, full-view, spacious and bright, with a wide field of vision.



PERFORMANCE PARAMETERS

Engine model	YC4A105Z-T20/75KW
Overall Dimensions (mm)	6450×2490×2500
Wheel base (mm)	2335±10
Wheel tread (mm)	2139±10
Rated bucket capacity (m³)	1.2
Rated load (kg)	2500
Max. Dumping height (41o dumping angle) (mm)	3050±50
Rated digging bucket capacity (m³)	0.3
Max. Digging force(KN)	51
Max. Digging depth (mm)	3820±20
Max. Digging height (mm)	5470±20
Gear shift	F4/R4
Tyres model	16.9-28



MOTOR GRADER

Motor grader is an articulated, hydraulic-driven, self-propelled construction machine. It is featured by mufti-function and high efficiency, an ideal machine for large-scale land leveling, also can be used for ditching, slope scraping, bulldozing, ripping, virgin land scarifying and snow-removing. APY series motor grader is suitable for construction projects ranging from road, highway, railway, airport, harbor, dam, industrial and farm land leveling.



Features

- 1. The front end adopts power shift transmission featuring single-handle manipulation and elector-hydraulic control.
- 2. 6 Forward and 3 reverse gears.
- 3. Highly efficient hydraulic system with hydraulic lock, enabling normal operation of every unit.
- 4. Fully hydraulic brake system provides high working safety and reliability for the equipment.
- 5. NO-SPIN differential, auto-locking and unlocking function, great stability, and powerful traction.
- 6. Box-type frame and an advanced transmission, able to finish heavy-duty tasks.
- 7. Front dozer and rear ripper are available as desired.

Model	APY135	APY170	APY190	APY220	APY240
Operating weight (kg)	12000	14500	15600	15800	20000
Blade length (mm)	3658	3658	4268	4320	4420
Blade height (mm)	580	580	580	580	610
Shovel blade thickness (mm)	20	20	20	16	16
Max. lift above ground (mm)	410	450	450	450	450
Max. grading depth (mm)	560	535	535	535	500
Wheel base (mm)	5780	6100	6100	6100	6900
Tread (mm)	2120	2120	2120	2120	2580
Min. turning radius (m)	6.6	7.3	7.3	7.3	8.3
Speed gear number	F6/R3	F6/R3	F6/R3	F6/R3	F6/R3
Engine Power/Model	97KW/6BT5.9-C130	132KW/6BT A5.9-C180	142kw/6CT A8.3-C190	160KW/6CT A8.3-C215	179KW/6CT A8.3-C240



WHEEL LOADER

Our company is ready to supply wheel loaders that suitable for different working conditions.

Main Application: load and transport materials in asphalt mixing plant and crushing station, and earth moving in all kinds of construction projects.

1. Strong power

This vehicle model is equipped with Wei chai engine, has large power and low fuel consumption and can save energy and protect environment. Also, it is equipped with a torque converter which has reliable quality and superior performance in the industry, as well as heavy loading drive axle, resulting in large tractive force.

2. High Efficiency

The optimized torque converter improves the tractive force. The unloading speed is quick and the breakout force is large. The vehicle has high efficiency and can save energy and protect environment.

The whole machine is flexible, with flexible steering, short wheelbase and small turning radius.

3. High reliability

Due to wear-resistant blades and bucket teeth, the service life of bucket becomes longer; C-shaped protecting bush is used at the hinge joint of hinge pin, which has good dustproof effect and makes the hinge joint of hinge pin more wearable.

The working system adopts rear-mounted multi-way valve and is operated by connecting rod. The operation is easy and flexible, with good hand feeling and high reliability.

4. Durability

The front and rear vehicle frames are optimized, impact resistance is improved and the fatigue life becomes longer; the casting-type beam of movable arm of the whole machine, optimized by the postdoctoral workstation of our company, has more reasonable structural design.



Wei chai Engine



Torque Converter



PERFORMANCE PARAMETERS

Model	AZJ920	AZJ930	AZJ950
Overall dimension (L×W×H) (mm)	6000×2050×2950	6890×2400×3070	7960×3070×3490
Rated load (kg)	2000	3000	5000
Rated capacity of bucket (m³)	1	1.7	3
Weight of complete machine (kg)	4500	10200	17000
Maximum unloading height (mm)	3100	3100	3100
Sum time of three items (s)	9.6	9.6	9.6
Wheelbase (mm)	2490	2850	3250
Wheel track (mm)	1690	1800	2250
Rated power of engine (kW/HP)	76/99	92/120	162/210
Gears of gearbox	F1/R1	F4/R2	F2/R1



Road Roller

Our company supplies a full range of road rollers/compactors, including single drum rollers, double drum rollers, triple drum rollers, tire rollers, with operating mass varying from 0.8 tons to 26 tons, capable of satisfying various compaction requirements.



Pneumatic Tyre Road Roller

Pneumatic tyre roller series are designed for the compact cohesive and non-cohesive materials, such as asphalt concrete, cement or lime stabilized soils, gravels, sands and clay mixtures, rolling cement concrete(RCC)in the construction projects, especially suitable for the preparation of the upper courses of highway.



Model		ATL1016	ATL1016H	ATL2030	ATL2030H
Item	Unit				
Min. Working Weight	kg	10000	10000	20000	20000
Max. Working Weight	kg	10000	18000	20000	20000
Travel Speed	Km/h	14.7	14	20.64	10
Tyre Quantity(Front+Rear)	PCS	4+5	4+5	5+6	5+6
Turning radius	mm	7500	7500	8000	8000
Grade ability	%	30	30	30	30
Compaction width	mm	2280	2280	2790	2790
Wheelbase	mm	3700	3700	3800	3800
Overall dimension	mm	4780×2100×3200	4780×2100×3200	4950×2750×3240	4950×2750×3240
Engine Model	/	4BT3.9/Cummins	4BT3.9/Cummins	6BTA5.9/Cummins	6BTA5.9/Cummins
Engine power	kW	75	75	125	125

Mini Road Roller

Mini road roller is hydraulic walking vibratory road roller, mainly used for municipal road construction, highway maintenance, and rolling work at narrow road surface.



Model		ATX100	ATX200	ATX300	ATX400
Item	Unit				
Operating mass	kg	900	1985	3400	3400
Static linear load	N/cm	56/77	110/105	136/136	150/150
Vibration amplitude	mm	0.5	0.5	0.5	0.5
Vibration frequency	Hz	70	65	50	50
Wheel Base	mm	1230	1230	1230	1230
Travel speed	km/h	0-5	0-8	0-12	0-12
Grade ability	%	30	35	30	25
Turning radius	mm	2600	2955	/	/
Overall dimension	mm	2400×880×1100	1965×880×1290	2760×1400×2520	2760×1400×2520
Drum width	mm	700	900	1250	1300
Engine power	kW	5.68	5.68	23	23
Engine Model	/	CHANGCHAI	YANMAR	CHANGCHAI	CHANGCHAI



Single Drum Hydraulic Road Roller

Front drum, rear tyre, hydraulic vibratory roller. Large working mass, strong centrifugal force. It is suitable for compaction of non-cohesive materials, such as gravel, rushed stone, sand-macadam mixture, sandy soil and rock filling on base course sub-base. It is an ideal compaction equipment for constructions of highway, railway, airport, harbors, dams, etc.



Model		ATD210	ATD212	ATD214	ATD216
Item	Unit				
Operating mass	kg	10000	12000	14000	18000
Static linear load	N/cm	326	326	373	428
Vibration amplitude(High /Low)	mm	1.7/0.8	1.7/0.8	1.7/0.8	2.0/1.0
Vibration frequency(High /Low)	Hz	28/35	28/35	28/35	28/35
Centrifugal force(High /Low)	kN	260/160	260/160	290/180	320/260
Travel speed	km/h	12	12	12	12
Grade ability	%	35	35	35	35
Turning radius	mm	7000	7000	7000	7000
Overall dimension	mm	5030×1880×2570	5610×2280×3000	5900×2280×3050	6665×2280×3090
Drum width	mm	2100	2100	2100	2100
Wheelbase	mm	3060	3060	3185	3265
Ground clearance	mm	360	360	432	432
Engine power	kW	110/Cummins	110/Cummins	110/Cummins	110/Cummins
Dimension (L×W×H)	mm	5650×2280×3000	5650×2280×3000	5900×2280×3050	5900×2280×3050

Double Drum Roller

Hydraulic double drum vibratory rollers are manufactured according to international advanced technology and by use of imported components. The machine is a double drum tandem vibratory roller. It is primarily used for the compaction of road bituminous course, sand gravel mixtures and RCC material. Being a universal compaction equipment for highway, municipal road, park area and industry ground, etc.



Model		ATC208	ATC210	ATC212	ATC214
Item	Unit				
Operating mass	kg	8000	10000	12000	14000
Static linear load	N/cm	231	238	286	333
Vibration amplitude	mm	0.67 / 0.34	0.67 / 0.34	0.8 / 0.4	0.8 / 0.4
Vibration frequency	Hz	45 / 50	45 / 50	40 / 46	40 / 46
Centrifugal force	kN	90×2 / 69×2	90×2 / 69×2	160×2 / 90×2	160×2 / 90×2
Travel speed	km/h	0-10	0-10	0-12	0-12
Grade ability	%	40	40	40	40
Turning radius	mm	6000	6000	7000	7,000
Drum Width	mm	1730	1730	2100	2100
Drum Diameter	mm	1150	1150	1350	1350
Wheelbase	mm	3217	3217	3717	3717
Ground Clearance	mm	258	258	324	324
Overall dimension	mm	4558×1840×2674	4558×1840×2674	5060×2250×3300	5060×2250×3300
Engine model	/	4BT3.9	4BT3.9	6BT5.9	6BT5.9
Engine power	kW	75	75	110	110



Bulldozer

The AD series bulldozer is a new product developed by our company in combination with the market requirements. It adopts Shang chai or Cummins engine with strong power and reliable performance. It is widely used in mining, large-scale earthwork, and other harsh construction environments.



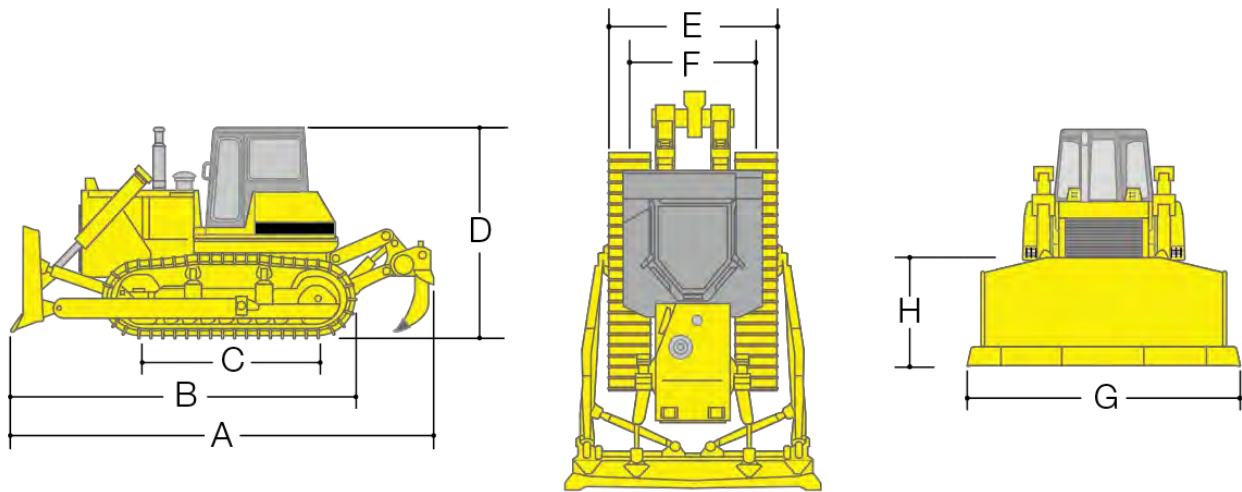
Features

1. Premium-grade steel and superior undercarriage parts are utilized.
2. Hydraulic pilot control joysticks allow for ease of operations.
3. Optimized hydraulic system improves work tools efficiency and blade maneuverability.
4. Improved final drive makes smoother and better torque delivery a reality.
5. The cab, ergonomically designed and equipped with air-conditioning, can provide a high comfort level and excellent visibility for the operator.



PERFORMANCE PARAMETERS

Model	AD178	AD245	AD345
Engine brand/Power	Weichai/130kw	Commins/175kw	Commins/257kw
operating Weight	16400 kg	23500 kg	37200 kg
Blade capacity	4.8m3	6.4m3	10m3
Track shoe width	510mm	560mm	560mm
Blade width	3390 mm	3725mm	4130mm
Track gauge	1150 mm	1317mm	1590mm
Ground pressure	0.067MPa	0.077MPa	0.105MPa
Gear	F3/R3	F3/R3	F3/R3
Overall dimension	4990×3440×3110mm	5460×3725×3395mm	6880×4130×3688mm



SN	Model	AD178	AD245	AD345
A	Overall length (with ripper)	6336mm	6805mm	8650mm
B	Overall length (with blade)	4559mm	5460mm	6880mm
C	Length of track on ground	2430mm	2730mm	3150mm
D	Overall height	3100mm	3395mm	3725mm
E	Overall width (without trunnions)	2390mm	2620mm	2780mm
F	Track gauge	1880mm	2000mm	2140mm
G	Blade width	3388mm	3725mm	4130mm
H	Blade height	1110mm	1210mm	1720mm



Asphalt Distributor Truck

Asphalt distributor is a kind of truck-mounted road construction and maintenance equipment that is designed to accurately distributing/spraying different kinds of asphalt materials, such as hot asphalt, cutback asphalt, asphalt emulsion, modified asphalt, asphalt rubber, etc. Asphalt distributor is mainly used for upper and lower seal layer, premier layer, asphalt surfacing, asphalt penetration surfacing, fog seal layer and other road surface processing; it can also be used for storage and transportation of liquid bitumen or heavy oil.



Features

- 1. All spraying operations can be done by one operator/the driver in the cab.
- 2. Suitable for spraying of asphalt emulsion, cutback asphalt, modified asphalt.
- 3. Spraying width is adjustable; each nozzle can be controlled independently.
- 4. High precision and clear spraying.
- 5. Automatic control system, easy for operation and maintenance.
- 6. The asphalt pump is equipped with diesel oil circulation cleaning system and purging system; saving diesel and keep pump and pipelines clean;
- 7. Low-speed chassis with large drive torque ensures steady and stable spraying .



Each nozzle is precisely engineered and manufactured so as to ensure spray consistency



Bitumen pump with international famous brand Viking gear pump, reliable and durable



Control panel at the end of the distributor truck, enable manual operation



This is the control panel inside driver’s cab, enable automatic control



Bitumen spraying operation on surface of city road (automatic control)

PERFORMANCE PARAMETERS

Model	AC5110GLQ	AC5160GLQ	AC5250GLQ
Chassis Brand	DONGFENG /HOWO	DONGFENG /HOWO	HOWO
Engine Power	140HP	180HP	290HP
Asphalt Tank Capacity	5,500L	8,000L	12,000L
Max. Spray Width	4,500mm /6,000mm	6,000mm	6,000mm
Spray Rate	0.25-3.0L/m ²	0.25-3.0L/m ²	0.25-3.0L/m ²
Spray Nozzle Number	33 /39	39	39
Heating Mode	Hot Oil Heating	Hot Oil Heating	Hot Oil Heating
Overall Dimension	7380×2250×2650mm	8995×2490×3160mm	11260×2490×3690mm

GLOBAL PRESENCE



ASIAN CONSTRUCTION EQUIPMENT GROUP CO., LTD.

Headoffice: Floor 22, No.14, Business Outer Ring Road,
Jinshui District, Zhengzhou,
Henan Province, China
Tel.: +86-371-55635088
Web: www.asianconst.com
Email: info@asianconst.com



BRIEF INTRODUCTION

Asian Construction Equipment Group Co., Ltd. (ACE Group) is a professional enterprise, which has been committing to R&D, manufacture and sales of asphalt mixing plant and the related road machinery since its founding. As a construction and engineering equipment solution provider, ACE is striving to contribute value to global infrastructure by exporting construction material equipment, general construction machinery, and road-building machinery.



Authority
Certification

20+
Credentials

70+
Patents





BAP80 📍 Philippines 🚚 80T/H

This asphalt batching plant is functioning well in the Philippines



BAP120 📍 Thailand 🚚 20T/H

The 120t/h-capacity asphalt plant brings great revenue for Thai client



BAP80 📍 Thailand 🚚 80T/H

BAP80 asphalt batch mix plant in Thailand



RAP160 📍 Thailand 🚚 160T/H

With old asphalt processing capacity of 160t/h, this plant saves a lot of costs for the Thai Customer





IAP60

📍 Madagasca 🚛 60t/h

IAP60 ultramobile asphalt plant ready to ship to Madagascar



IAP100

📍 Egypt 🚛 100t/h

IAP60 ultramobile asphalt plant for Egyptian Customer





BAP100 📍 Egypt 🚚 100T/H
BAP100 Batch Mix Asphalt Plant in Egypt



BAP80 📍 Bangladesh 🚚 80T/H
BAP80 Batch Mix Asphalt Plant in Bangladesh



BAP80 📍 Bangladesh 🚚 80T/H
BAP80 Batch Mix Asphalt Plant in Bangladesh



JNW2000 📍 China 🚚 160T/H
JNW2000 Advanced Asphalt Mix Plant Erected in China





BAP120 📍 Ethiopia 🚚 120T/H
BAP120 Batch Mix Asphalt Plant in Ethiopia



BAP120 📍 Ethiopia 🚚 120T/H
BAP120 Batch Mix Asphalt Plant in Ethiopia

120t/h, batch mix asphalt plant with side-mounted finish hot storage bin, specially designed for Ethiopia where the altitude is higher than 3000mm. High performance asphalt mix for expressway pavement, boosting infrastructure and economic prosperity of Ethiopia.



BAP60 📍 Myanmar 🚚 60T/H
BAP60 Batch Mix Asphalt Plant in Myanmar

Customized design, elaborately fabricated asphalt plant for Myanmar where there are plenty of rain and humidity. Shelters and humidity proof devices deployed for protection against heavy rain. The second plant for a same client who is quite satisfactory with the first one.



BAP120 📍 Russia 🚚 120T/H
BAP120 Batch Mix Asphalt Plant in Russia



BAP120 batch mix asphalt plant with extra thermal insulation and bottom-mounted hot storage silo, specially designed for Russia where the weather is quite cold in winter. Quality product and nice after-sale service help client grow his business.



DAP60 📍 Peru 🚚 60T/H
DAP60 Drum Mix Asphalt Plant in Peru



BAP60 📍 Kyrgyzstan 🚚 60T/H
BAP60 Batch Mix Asphalt Plant with bitumen decanter



60t/h, batch mix asphalt plant running smoothly in Kyrgyzstan. Due to shortage of liquid bitumen supply, a bitumen decanter was deployed to match with the plant. Nice solution helps clients to overcome difficulties. High grade road to be built in mountainous area of Kyrgyzstan.

Hearing the sound of gunshots, our brave engineers finished installation and commissioning of this 120t/h asphalt plant in Syria. This plant is mainly for reconstruction and recovery of damaged roads during war. Wish Syria peace and recovery!



BAP120

📍 Syria

🚚 120T/H

BAP120 Batch Mix Asphalt Plant in Syria



BAP60

📍 Uzbekistan

🚚 60T/H

BAP60 Batch Mix Asphalt Plant in Uzbekistan



BAP120

📍 Uzbekistan

🚚 120T/H

BAP120 Batch Mix Asphalt Plant in Uzbekistan





This ELB1000 eco-friendly asphalt plant is highly customized by clients and deliberately fabricated to meet safety and environmental protection requirements in Australia. Excellent pollution control helps this plant won local authorities acceptance subject to BS EN standard. It is more productive than the rated capacity due to clients rich operation experiences.



ELB1000 📍 Australia 🚚 80T/H

ELB100 Environmental-friendly asphalt batch mix plant shipped to Australia





UNOPS Officers visit Liaoyuan, inspect and accept the 29 sets asphalt plant before shipment.

These 29 sets asphalt plants are UNOPS projects for Myanmar. These asphalt plants with generator sets and bitumen decanter, compact and portable, quite suitable for road construction in Myanmar's mountainous and plateau areas. Liaoyuan is glad to make contributions to assist UN to improve global infrastructure in the needed countries.



CAP40 📍 Myanmar 🚚 40T/H
CAP40 Compact Asphalt Plant in Myanmar





JNW4000 📍 China 🚚 320T/H

320t/h Advanced asphalt batch mix plant with a 600t/h wet mix macadam plant and a 10t/h asphalt emulsion plant.



MAP80 📍 Thailand 🚚 80T/H

MAP80 Mobile Asphalt Batch Mix Plant in Thailand




Portable asphalt plants with hydraulic self-erection chassis, specially designed according to Thai clients requirements. This plant is for construction and maintenance of a road with length over 1200km. Fast relocation, self-erection and batch mix make it ideal for long road projects.





This mobile asphalt plant is flexible and portable, batch mix, with a capacity of 60t/h, produces types and grades of asphalt mix for pavement of all type of roads. Fast relocation with road building projects makes it quite popular in Ethiopia with large territory. This mobile asphalt plant is ideal for road project contractor.



MAP60  Ethiopia  60T/H
MAP60 Mobile Asphalt Plant in Ethiopia



ELB1500  Lebanon  120T/H
ELB1500 Eco-friendly Asphalt Plant in Lebanon



After comparison with several other manufacturers, Lebanese clients finally selected ACE. QA/QC system and environmental concern won clients' recognition. This ELB1500 with excellent pollution control was erected in July 2017 and now under smooth operation.



This BAP120 asphalt mixing plant is advance type with special customization design, dust filler reclaim and disposal unit, additive dosing unit, small crane for screen deck replacement, bottom-mounted large capacity hot storage silo, rain and storm protection, ect. Malaysia clients has over 30 years experience in Asphalt Mix production and supply. We worked together produce a awesome asphalt mixing plant suitable for Malaysia and ASEAN countries.



BAP120 📍 Malaysia 🚚 120T/H
BAP120 Advanced Asphalt Plant in Malaysia



DAP-120M 📍 Mali 🚚 120T/H
120t/h Mobile continuous asphalt plant in Mali



This is a fully mobile continuous asphalt mix plant consisting of 5 mobile modules, specially designed and fabricated for road construction Mali and West African countries with large territory yet small population. Fast and easy relocation makes the plant keep pace with road building project closely. Generator sets are furnished for field operations.



BAP60 📍 Myanmar 🚚 60T/H
BAP60 Asphalt batch mix plant in Myanmar



ELB1000 📍 Pakistan 🚚 80T/H
ELB1000 Eco-friendly asphalt batch mix plant in Pakistan



BAP120 📍 Pakistan 🚚 120T/H
BAP120 Batch Mix Asphalt Plant in Pakistan



DAP60 📍 Paraguay 🚚 60T/H
60t/h continuous asphalt plant in Paraguay





BAP80 📍 Russia 🚚 80T/H
BAP80 Asphalt batch mix plant in Russia



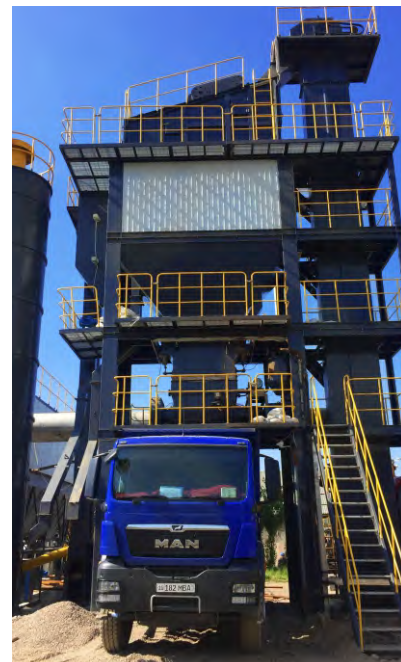
BAP120 📍 Russia 🚚 120T/H
BAP120 Batch Mix Asphalt Plant in Russia



BAP100 📍 Uzbekistan 🚚 100T/H
BAP100 Batch Mix Asphalt Plant in Uzbekistan



BAP1200 📍 Thailand 🚚 120T/H
BAP1200 Batch Mix Asphalt Plant in Thailand





BAP240 asphalt plant specially designed for Uzbekistan, bottom-mounted hot storage silo, reclaimed filler system, pollution control devices, extra heat insulation are deployed to make the plant energy-saving, efficient and clean production. The plant is mainly for pavement of expressway and airport runways in Uzbekistan.



BAP240 📍 Uzbekistan 🚚 240T/H
BAP240 Batch Mix Asphalt Plant in Uzbekistan



JNW4000 📍 China 🚚 320T/H
320t/h Advanced asphalt plant with RAP recycling (80t/h) in Henan Province.
The 600t/h wet mix plant also made by ACE Group.





BAP120 📍 Bangladesh 🚚 120T/H
BAP120 Asphalt Batch Mix Plant in Bangladesh



BAP60 📍 Russia 🚚 60T/H
BAP60 Asphalt plant erected in Russia



BAP80 📍 Indonesia 🚚 80T/H
BAP80 Asphalt plant erected in Indonesia



DAP20 📍 Malaysia 🚚 20T/H
DAP20 drum mix asphalt plant in Malaysia





DAP80 📍 Thailand 🚚 80T/H
DAP80 Continuous asphalt plant in Thailand



DAP80 📍 Russia 🚚 80T/H
DAP80 Continuous asphalt plant in Russia

With vast territory and small population in Siberia of Russia, highway road density is relative lower. Thus this DAP80 drum mix asphalt plant is introduced. It is proven that 80t/h drum mix asphalt plant is the best choice.



DAP80 📍 Peru 🚚 80T/H
DAP80 Drum Mix Asphalt Plant in Peru



The plant is elaborately designed, a very nice plant, both appearance and performance. The plant working very well, the owner recovered his investment in a very short time. Now it is still in good performance and bring very sound profits to its owner.



BAP60 📍 Tajikistan 🚚 60T/H
BAP60 Asphalt plant in Tajikistan by land.



BAP120 📍 Thailand 🚚 120T/H
BAP120 Asphalt batch mix plant in Thailand



DAP40 📍 Myanmar 🚚 40T/H
DAP40 Drum Mix Asphalt Plant in Myanmar



MAP120 📍 Uzbekistan 🚚 120T/H
MAP120 Mobile asphalt batch mix plant in Uzbekistan



20 sets of mobile asphalt plants OEM for PPP projects in Uzbekistan. This is the first one shipped and the other 19 sets will be delivered in 4 years. 120t/h, batch mix, highly portable asphalt plants, specially designed and manufactured for infrastructure improvement plan of Uzbekistan.



ELB1000 📍 Australia 🚚 80T/H
ELB1000 Environmental-friendly Asphalt Plant in Australia



BAP120 📍 Russia 🚚 120T/H
BAP120 Asphalt batch mix plant in Russia



120t/h, bag house dust filter, fuel oil and diesel dual-fueled burner make this plant productive, lower operation expense and clean. This plant is to product asphalt mix for expressways and main truck roads in urban area. Extra thermal insulation on the plant to protect against extremely cold weather in winter.



BAP120 📍 Indonesia 🚚 120T/H
BAP120 Asphalt batch mix plant in Indonesia



DAP40 📍 Myanmar 🚚 40T/H
DAP40 Drum mix asphalt plant in Myanmar



DAP80 📍 Myanmar 🚚 80T/H
DAP80 Drum mix asphalt plant in Myanmar.



DAP60 📍 Brazil 🚚 60T/H
DAP60 Continuous asphalt drum mix plant in Brazil.



This DAP80 asphalt plant is drum mix, 80t/h, with water dust filter. Stable quality and cost-effectiveness help clients return his investment in a less than one year. Assist clients in growing their business is what Liaoyuan in pursue of. Sturdy quality and nice after-sale service is the way achieve it.





Infrastructure of Uzbekistan develops very fast and batch mix asphalt plant are more popular than drum mix. According to our business survey and clients project requirements, Liaoyuan suggest this 80t/h batch mix asphalt plant. Time and fact proved that this is a wisdom choice.



BAP80 📍 Uzbekistan 🚚 80T/H
BAP80 Batch mix asphalt plant in Uzbekistan



BAP80 📍 Zambia 🚚 80T/H
80t/h Batch mix asphalt plant in Zambia



DAP80 📍 Columbia 🚚 80T/H
DAP80 Drum mix asphalt plant in Columbia



BAP120 📍 Thailand 🚚 120T/H
BAP120 Asphalt batch mix plant erected in Thailand



Continuous asphalt plant is widely used for road construction and maintenance in Latin American countries. Low initial investment and fast ROI attract many beginners in asphalt mix production and supply. Smaller size, compact structure and easy operation make the plant popular.





DAP20 📍 Kenya 🚚 20T/H
DAP20 drum mix asphalt plant in Kenya



BAP120 📍 Thailand 🚚 120T/h
BAP120 Asphalt batch mix plant in Thailand



BAP120 📍 Algeria 🚚 120T/h
BAP1500 Asphalt batch mix plant in Algeria



This the first 120t/h batch mix asphalt plant Liaoyuan exported to African countries. Technical teams made great efforts to modify the plant so that it is suitable for 40' container shipment. Lower transportation costs, nice quality and after-sale service won clients praise and trust. Later clients also placed orders for concrete batch plants, weigh bridges and other accessory road machines.

